

ess Advisory Council Meeting
tional Service Central of Central Ohio
esday, December 16, 2020

LEADING FOR EQUITY IN THE CONTEXT OF COVID-19

Ben Williams, PhD, *Chief Executive Officer, NAPE*



NAPE

National Alliance for
Partnerships in Equity

NAPE's Mission

We build **capacity** to implement **effective solutions** for increasing access, **equity** and workforce **diversity**.

equity

access

diversity





WHAT ARE THE INEQUITIES MAGNIFIED BY COVID-19?



Inequities magnified by COVID-19

- Access to high-speed internet and WI-FI
- Access to adequate technology for online and hybrid learning (a smart phone is not enough)
 - Having access to start with
 - Challenges of having to share with siblings and other family members
- Effect on school and work-based learning
- Navigating the tools being used in school (being able to stay on top of Zoom classes; assignments; communications; supports)
 - Missed assignments
- Online v. Hybrid learning and instruction
- Virtual school workload
- Older children having to take care of younger children
- Parents and family members having to teach and guide instruction and learning at home



Inequities magnified by COVID-19

- Access to food
 - Job insecurity
 - Shelter insecurity
 - Sickness
 - Trauma
 - Racialized trauma and fear of violence
 - Trauma from loss
 - Depression
- Students needing differentiated instruction, i.e. ELL and students with IEPs or 504 plans, not getting adequate accommodations and support
 - Limited federal and state resources for educational institutions
 - Pressure on teachers and administrators
 - Students falling through the cracks



Excellent article from yesterday NBC - <https://www.nbcnews.com/news/education/covid-having-devastating-impact-children-vaccine-won-t-fix-everything-n1251172>

DISPROPORTIONATE EFFECTS ON COMMUNITIES OF COLOR AND INDIVIDUALS WITH DISABILITIES



Math performance

“The average student in grades 3-8 who took a math assessment this fall scored 5 to 10 percentile points behind students who took the same test last year, with Black, Hispanic and poor students falling even further behind.”
(Einhorn, 12/15/2020 – yesterday)



The most vulnerable

“An estimated 3 million vulnerable students - who are homeless, in foster care, have disabilities or are learning English – appear to not be in school at all.” (Einhorn, 12/15/2020 – yesterday)



Those most affected

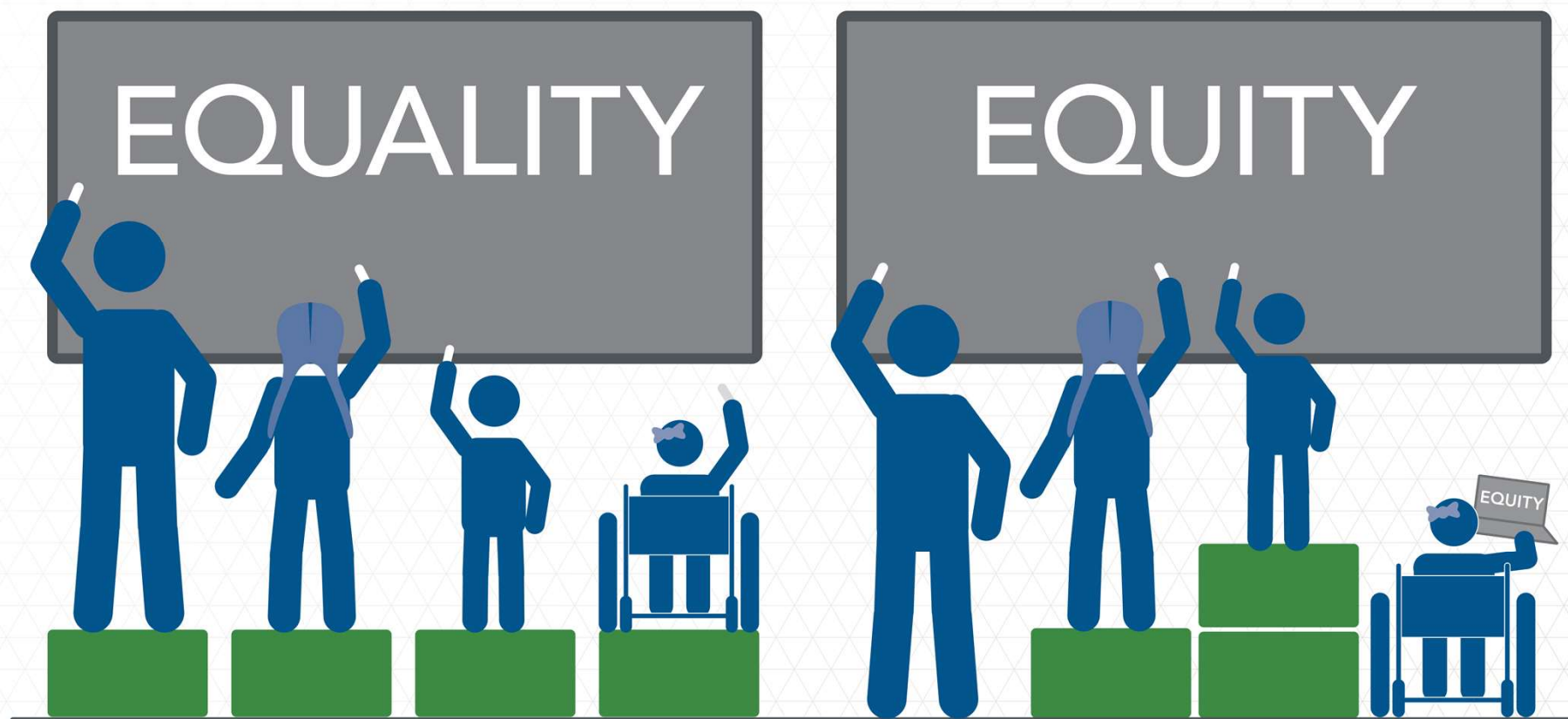
“Those children most affected will be those facing racial, economic and other inequities that have only become more pronounced since the pandemic began.” (Einhorn, 12/15/2020 – yesterday)



Equity is when every student has what they need to succeed.



NAPE
National Alliance for
Partnerships in Equity
Education Foundation



National Alliance For Partnerships In Equity | www.napequity.org
DESIGN BASED ON ILLUSTRATION BY AUDREY AND AUBREY SELDEN

© NAPE EF 2020

Whose experiences need to be centered?



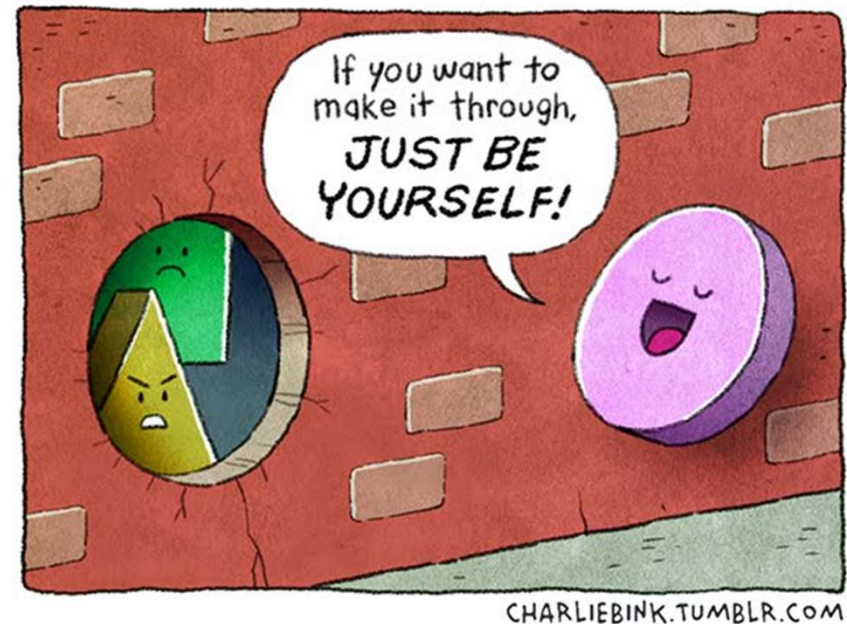
- Students
- Parents
- Community members
- Teachers

What are the assets that key stakeholders bring with them and how can their experiences and voices be centered in the shared solutions to our problems?

How can power be shared and redistributed?

Systemic Inequalities

- Institutions and systems are not neutral
- Personal biases are reproduced within a system
- Structures and policies of one institution or department can undo the outcomes of another





HOW DO WE CONSTRUCT A SYSTEM WITH DIFFERENT OUTCOMES?



N A P E

What are the solutions?

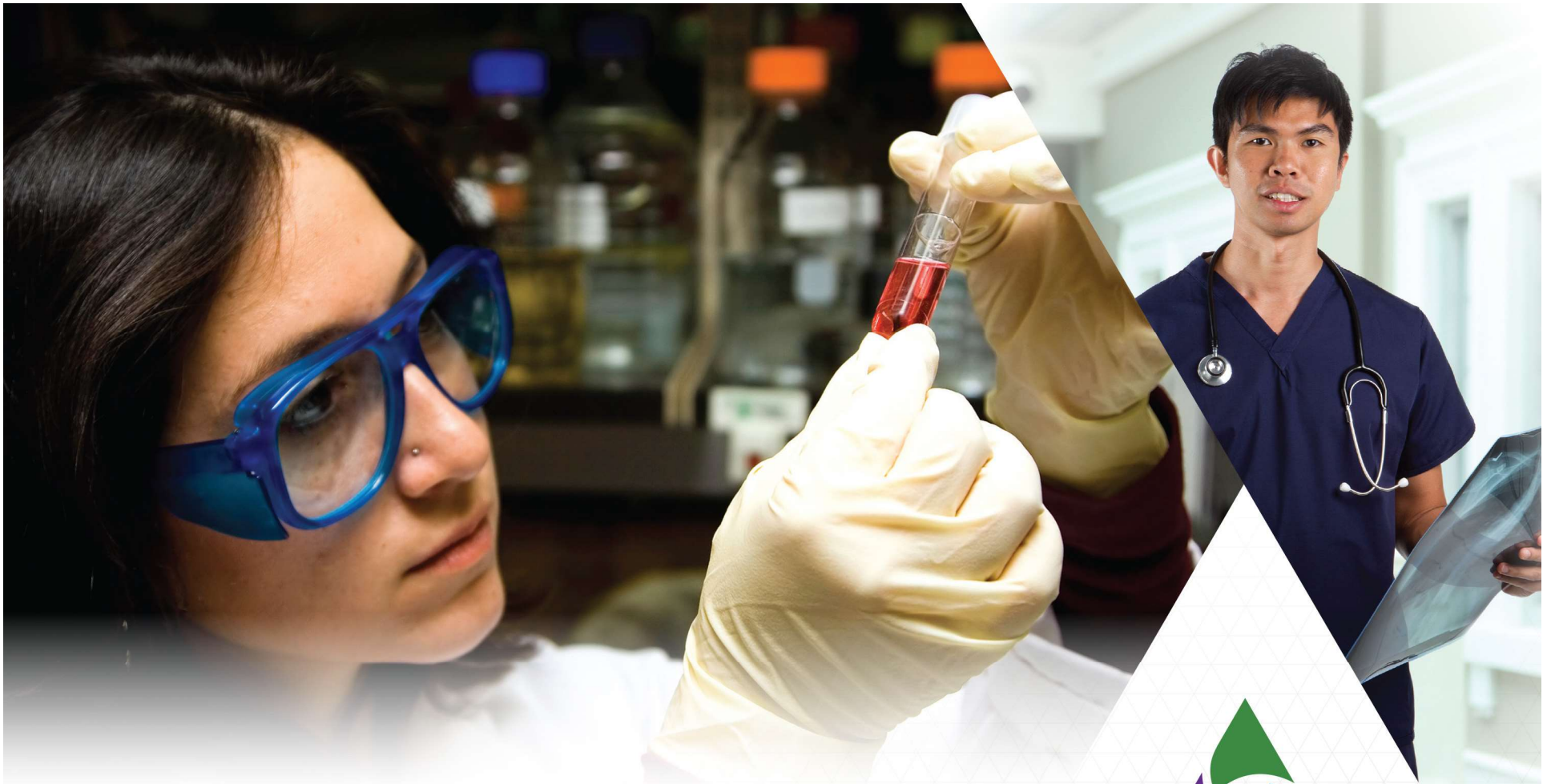


- Partnership between Education and Industry
- Breaking out of silos
- Creativity and Innovation
- Centering the voices of students and parents
- Recognition of the need to catch students up
- Mental Health supports (like “recovering from a natural disaster”)
- Grace and patience
- Resources

A new system imagined

“A nationwide tutoring corps, an increased focus on how trauma affects learning, a sweeping effort to connect every home to the internet, and a major shift to community schools – where families can get social services in the same place where their children learn.” (Einhorn, 12/15/2020 – yesterday)





THE TIME IS NOW



N A P E

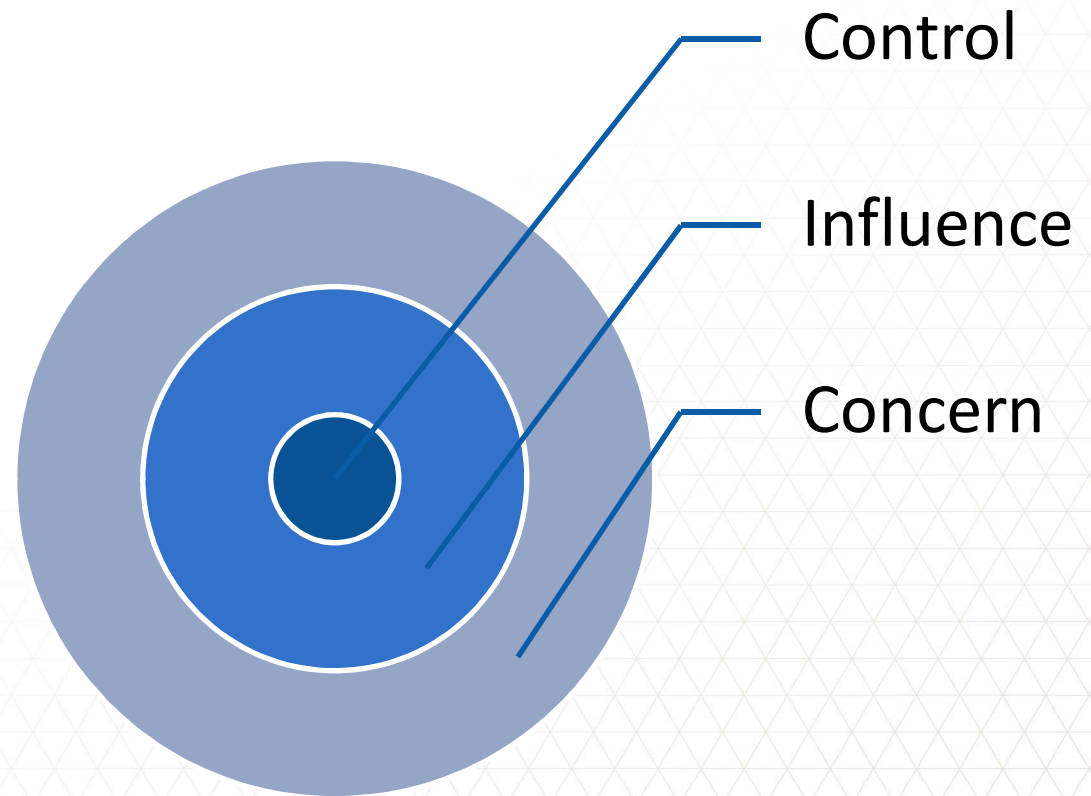
National Alliance for
Partnerships in Equity

Spheres of Influence & Control



Reflect and Plan

- Thinking of your work and community, how can you take action in your spheres of influence and control?





Q Search...



MEMBERSHIP PUBLIC POLICY PERKINS V PROFESSIONAL DEVELOPMENT SPECIAL PROGRAMS RESEARCH & PRACTICE

Registration is Open!

National Summit for Educational Equity

Advocates for Equity

April 26-29, 2021

Pre-Conference April 20-22, 2021

REGISTER

We are the National Alliance for Partnerships in Equity (NAPE):

Providing equity leadership and capacity building to transform education and workforce systems.

- Equitable Learning Environments in a COVID-19 Reality
- Access and Equity in CTE and STEM for Underrepresented Students
- Foster a Diverse Workforce
- Public Policy

April 26-29, 2021

\$99 members; \$149 for nonmembers

“I am only one, but still I am one. I cannot do everything, but still I can do something; and because I cannot do everything, I will not refuse to do something I can do.”



-Edward Everett Hale



Thank you for your participation!

National Alliance for Partnerships in Equity

Ben Williams, PhD

bwilliams@napequity.org

www.napequity.org

